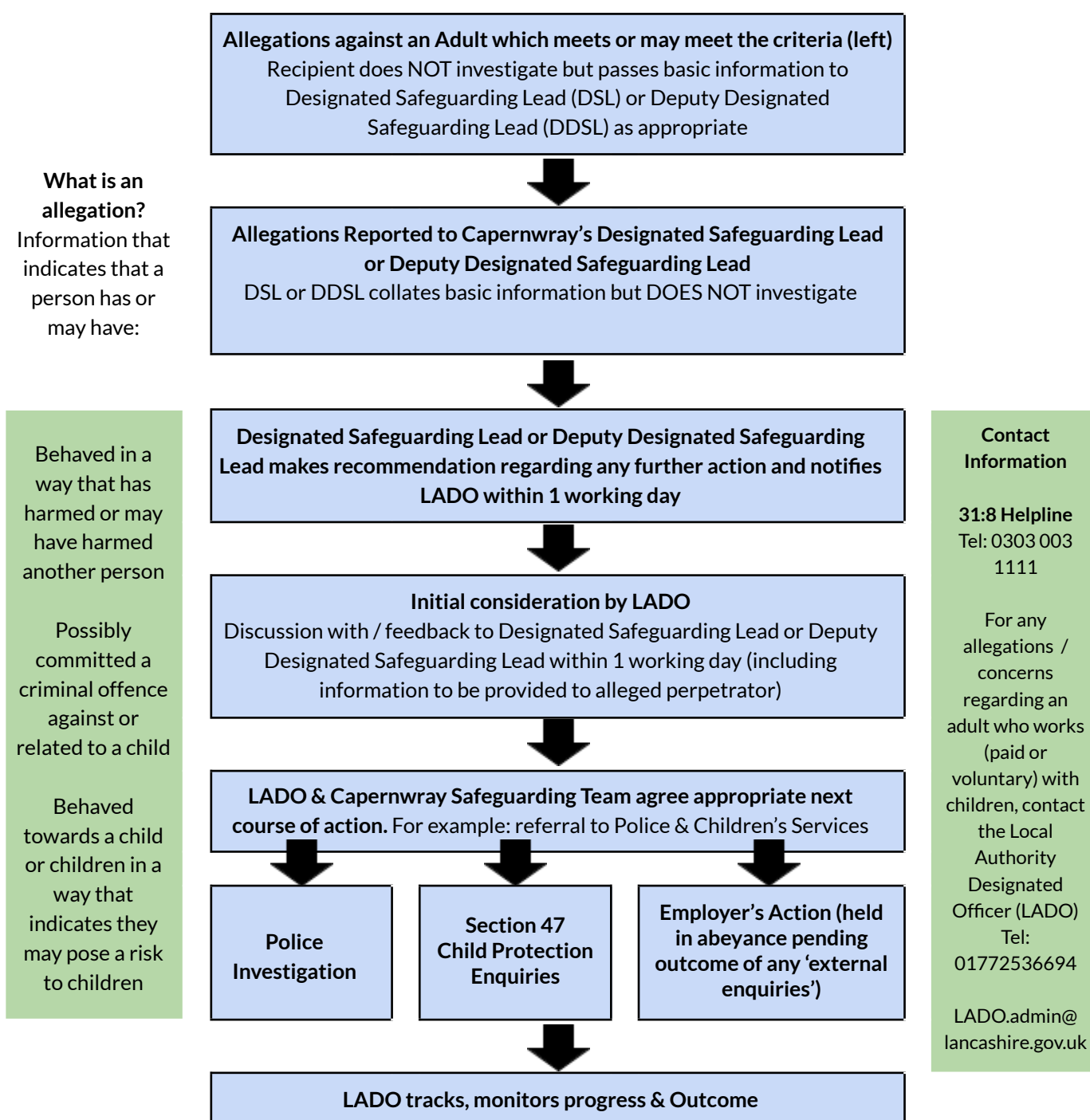


## Appendix 4: Flow Chart: Procedure for Managing Allegations against those working with children



**Remember:** the LADO must be contacted when you have received any allegation or concern about any person who works with children who may have:

- Behaved in a way that has harmed, or may have harmed a child
- Possibly committed a criminal offence against or related to a child
- Behaved towards a child or children in a way that indicates they may pose a risk of harm to children